



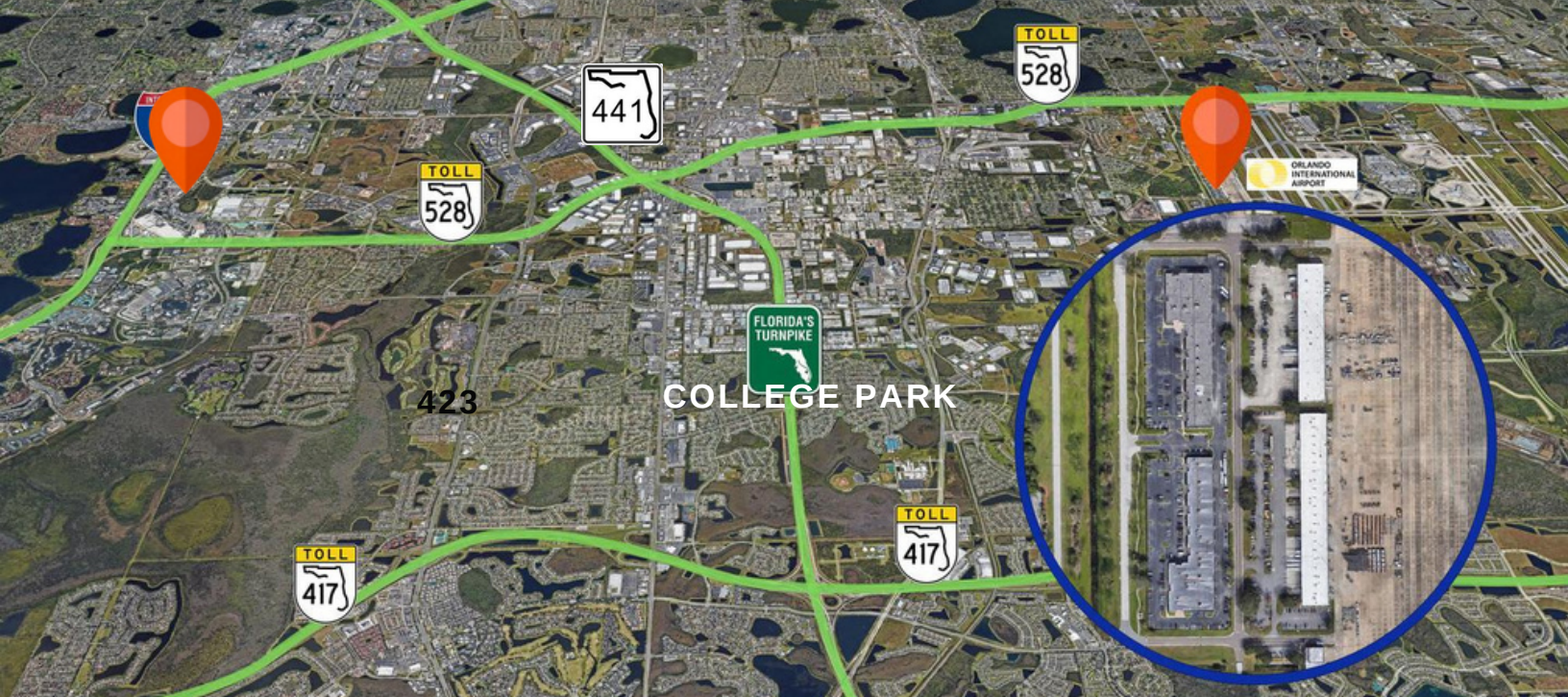
**FOR
LEASE**



Availability from 2,000 SF to 25,095 SF
9659, 9669 & 9403 TRADEPORT DR.
ORLANDO, FL 32827



Allied Commercial
REAL ESTATE



GENERAL INFORMATION

Building located in Free Trade Zone on Orlando International Airport Property (GOAA)

Two Buildings 55,555 sf each

Loading: Grade Level

Clear Height: 18'

PRIME LOCATION

Located on airport property with outstanding access to the:

- Turnpike
- SR 528 and SR 417

NORTH BUILDING

Rental Rate: From \$14.95

Opex: \$2.75

Suite 9403: 25,095 sf in shell condition

Minimum

Contiguous: 12,000 sf

SOUTH BUILDING

Suite 9659: 3,998 sf, of which 634 sf is unairconditioned warehouse

Monthly: Approx. \$6,200 gross

Suite 9669: 2,094 sf available for sublease

Monthly: \$4,100/mo

SHER TOLAN, SIOR

407-810-2291

stolan@allied-comm.com

5401 S Kirkman Rd. Suite 310

Orlando, FL 32819

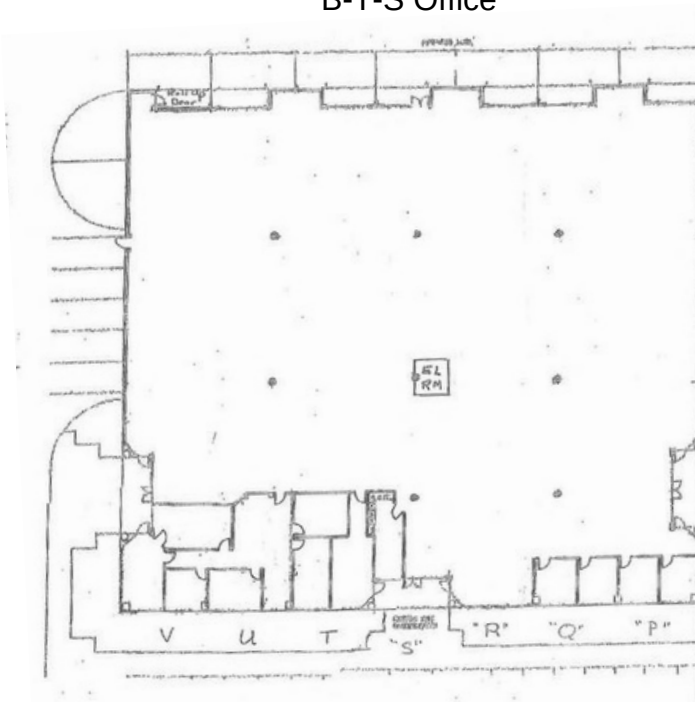
www.allied-comm.com



Allied Commercial
REAL ESTATE

SUITE 9403

25,095 SF
B-T-S Office

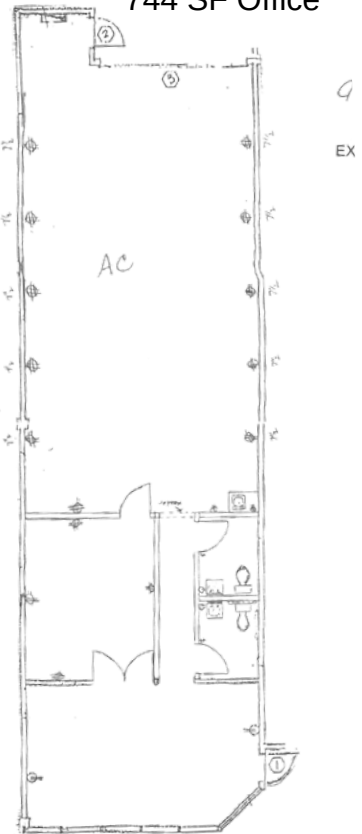
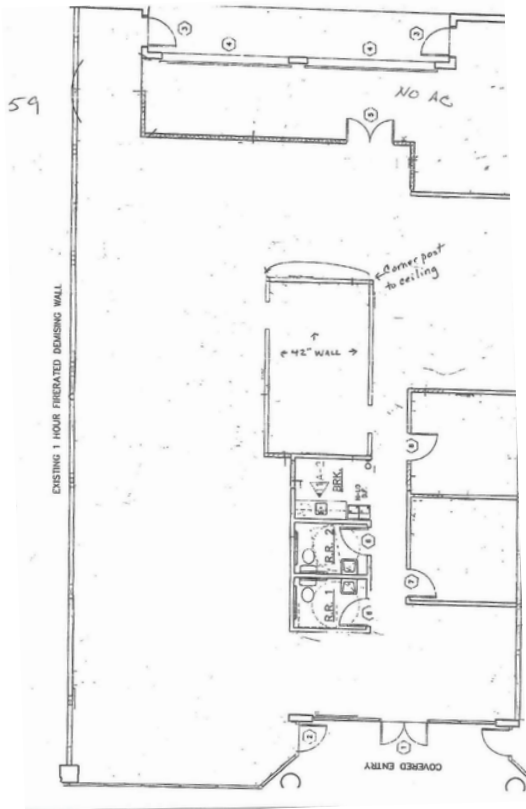


SUITE 9659

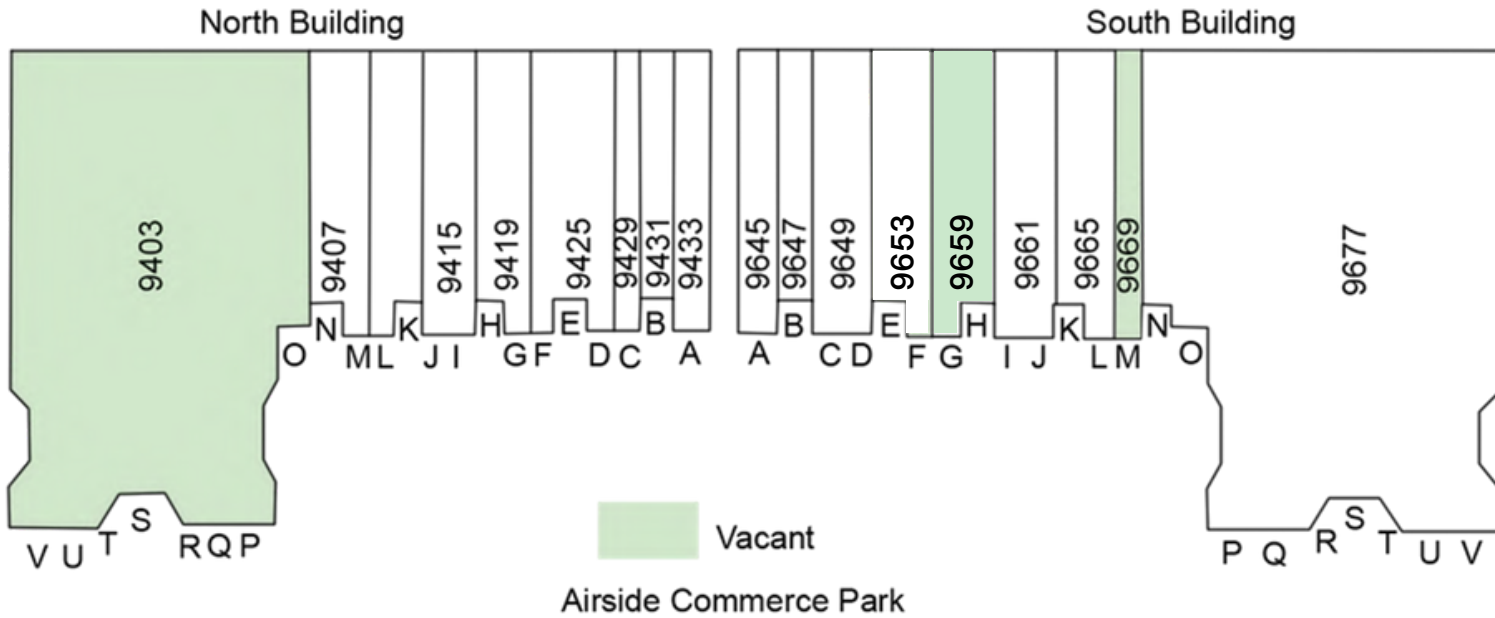
3,998 SF
634 SF non-AC Warehouse
3,364 SF Office

SUITE 9669 (FOR SUBLEASE)

2,094 SF
1,350 SF AC Warehouse
744 SF Office



Airside Commerce Park



This information has been obtained from sources believed reliable, but has not been verified for accuracy or completeness. You should conduct a careful, independent investigation of the property and verify all information. Any reliance on this information is solely at your own risk. Allied Commercial and the Allied Commercial logo are service marks of Allied Commercial Partners, LLC. All other marks displayed on this document are the property of their respective owners. Photos herein are the property of their respective owners. Use of these images without the express written consent of the owner is prohibited.

SHER TOLAN, SIOR

407-810-2291
stolan@allied-comm.com
5401 S Kirkman Rd. Suite 310
Orlando, FL 32819
www.allied-comm.com



Allied Commercial
REAL ESTATE