

**FOR
SALE**

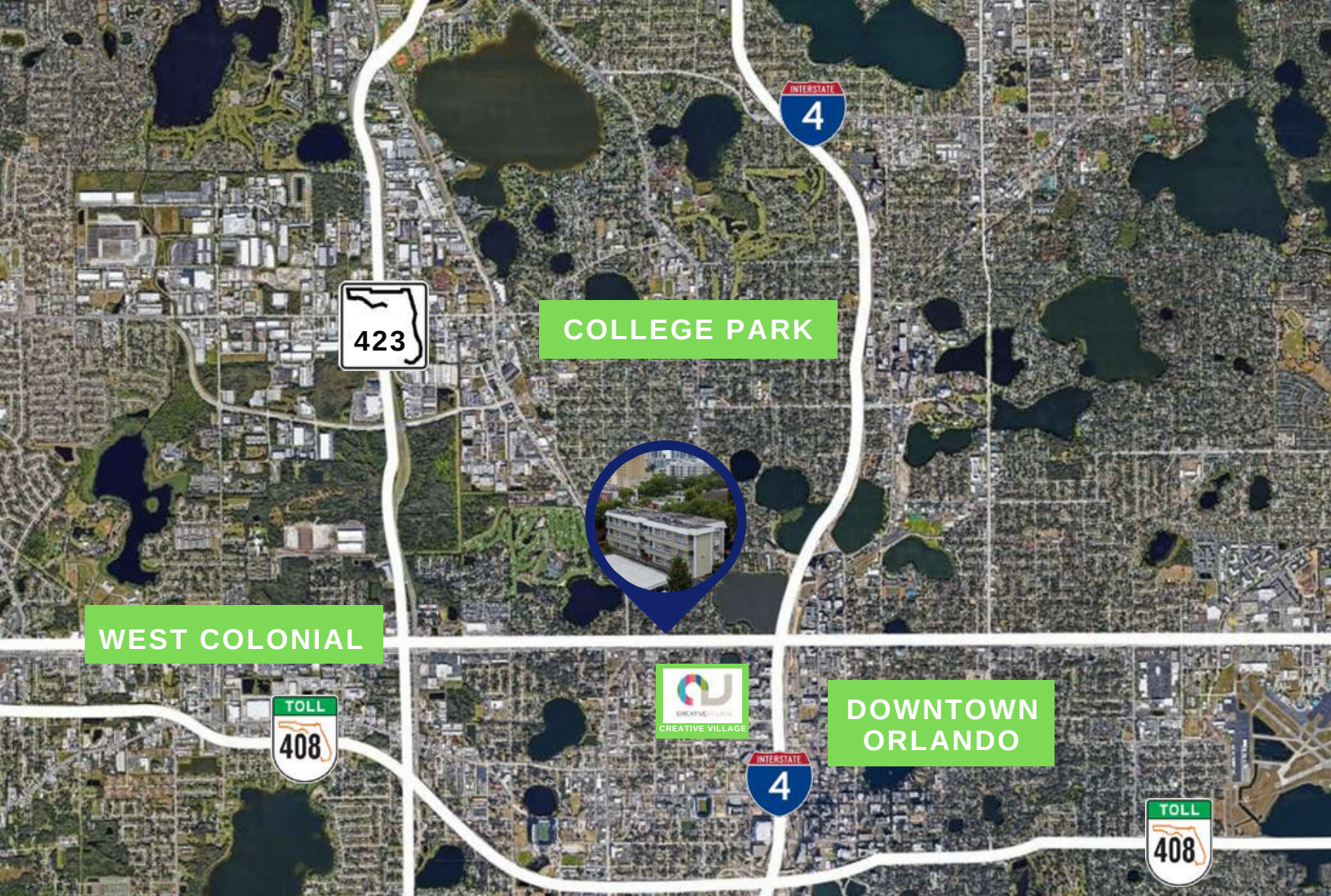


**OFFICE SUITE AVAILABLE WITH
CONTEMPORARY FINISHES**

**425 W. Colonial Drive
Suite 203 Orlando FL 32804**



Allied Commercial
REAL ESTATE



- | | |
|--------------------------|---|
| Suite 203: | 581 SF (2 private offices, lobby, breakroom) |
| Purchase Price: | \$110,000 |
| Association Dues: | \$370 per month |
| Location: | Minutes from downtown Orlando, federal and county court houses, Creative Village and College Park |
| Access: | 100 yards from full I-4 interchange, couple of miles to East-West Expressway |
| Frontage: | West Colonial Drive |
| Parking: | Free, surface parking |
| Use: | Professional office uses only, no retail |
| Amenities: | Surrounded by many local restaurants |

SHER TOLAN, SIOR

407-810-2291

stolan@allied-comm.com

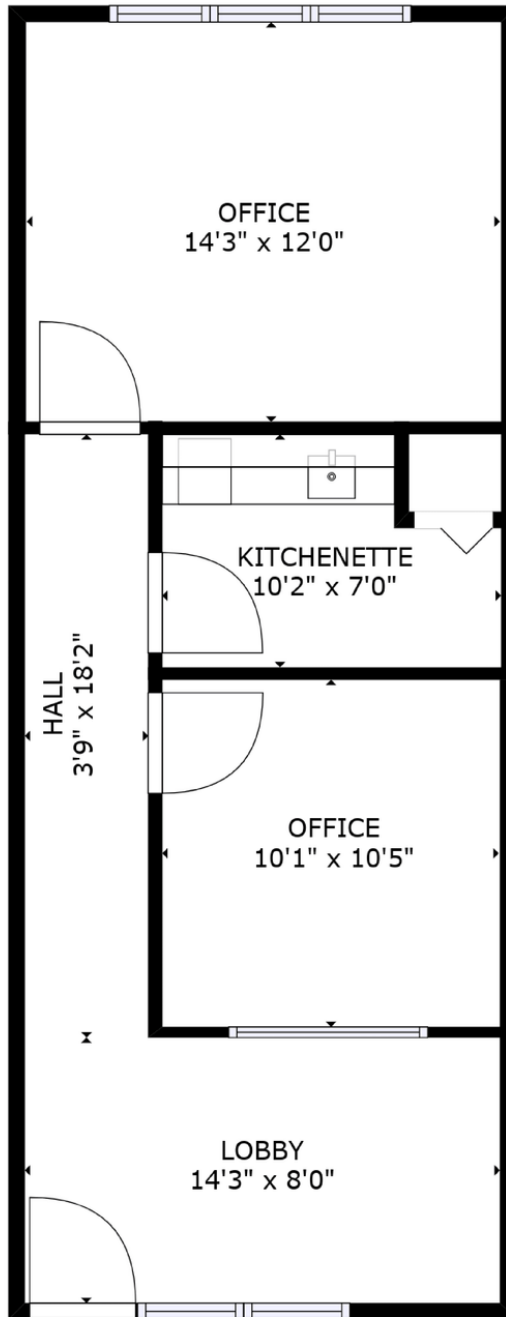
5401 S Kirkman Rd. Suite 310

Orlando, FL 32819

www.allied-comm.com



Allied Commercial
REAL ESTATE



FLOOR 1

GROSS INTERNAL AREA
FLOOR 1: 551 sq. ft
TOTAL: 551 sq. ft

SIZES AND DIMENSIONS ARE APPROXIMATE, ACTUAL MAY VARY.

SHER TOLAN, SIOR

407-810-2291

stolan@allied-comm.com

5401 S Kirkman Rd. Suite 310

Orlando, FL 32819

www.allied-comm.com



Allied Commercial
REAL ESTATE

Suite 203



Executive Office



Lobby



Hallway Back to Offices



Office #2



Breakroom/Supply Room

SHER TOLAN, SIOR

407-810-2291

stolan@allied-comm.com

5401 S Kirkman Rd. Suite 310

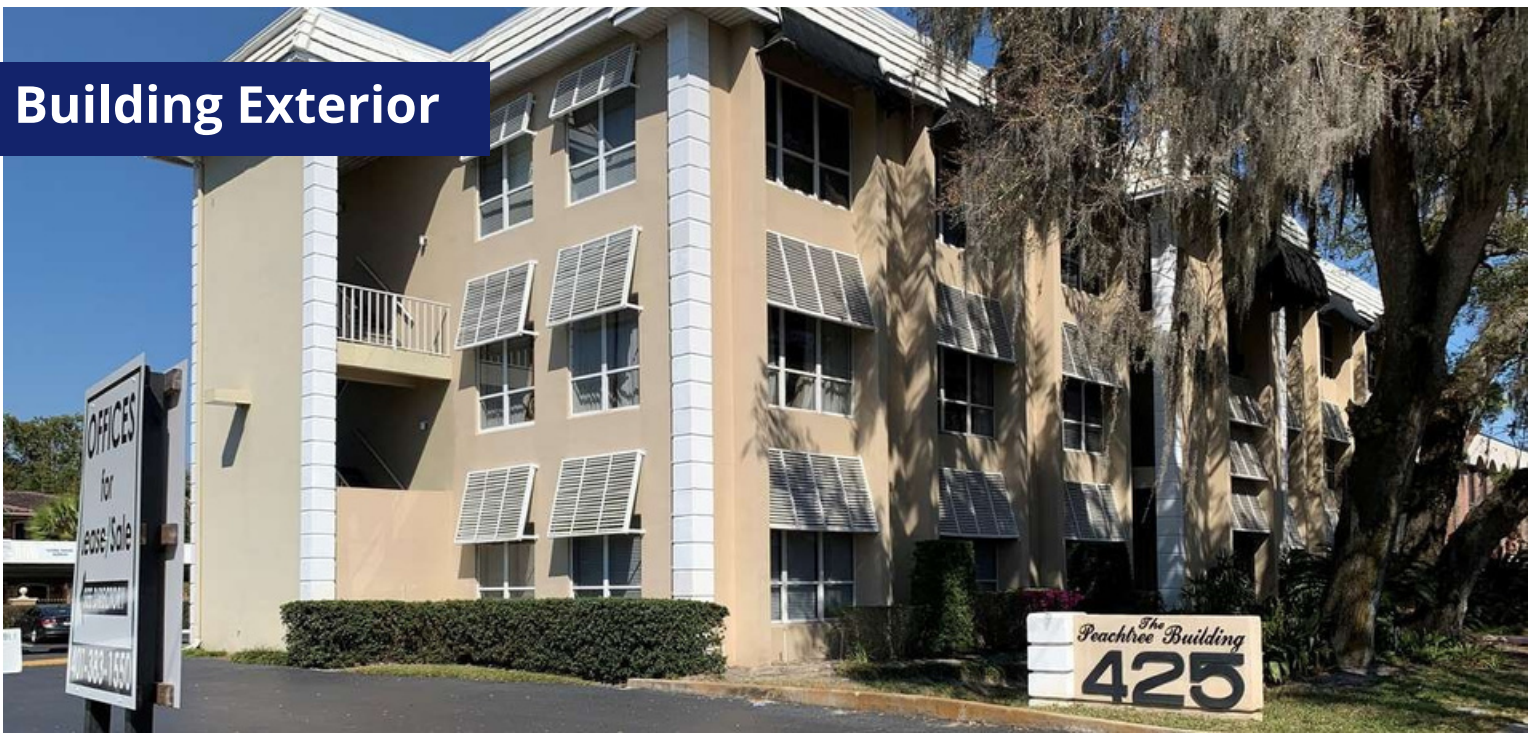
Orlando, FL 32819

www.allied-comm.com



Allied Commercial
REAL ESTATE

Building Exterior



This information has been obtained from sources believed reliable, but has not been verified for accuracy or completeness. You should conduct a careful, independent investigation of the property and verify all information. Any reliance on this information is solely at your own risk. Allied Commercial and the Allied Commercial logo are service marks of Allied Commercial Partners, LLC. All other marks displayed on this document are the property of their respective owners. Photos herein are the property of their respective owners. Use of these images without the express written consent of the owner is prohibited.

SHER TOLAN, SIOR

407-810-2291

stolan@allied-comm.com

5401 S Kirkman Rd. Suite 310

Orlando, FL 32819

www.allied-comm.com

