

**FOR  
SALE**



**7.06 ACRES**  
**19501 INDEPENDENCE BLVD.**  
**GROVELAND, FL 34736**



**Allied Commercial**  
REAL ESTATE





## PROPERTY SPECS

Future Land Use:

Industrial, about to be annexed into city of Groveland

Parcel ID  
Number:

29-21-25-0004-000-00700

Acres:

7.06 acres, 4.60 uplands, 140' wide

Location:

Minutes to the turnpike, next door to new Amazon facility under construction

## FINANCIAL INFORMATION

Price:

\$635,000 or \$91,000 per acre

**SHER TOLAN, SIOR**

407-810-2291

stolan@allied-comm.com

5401 S Kirkman Rd. Suite 310

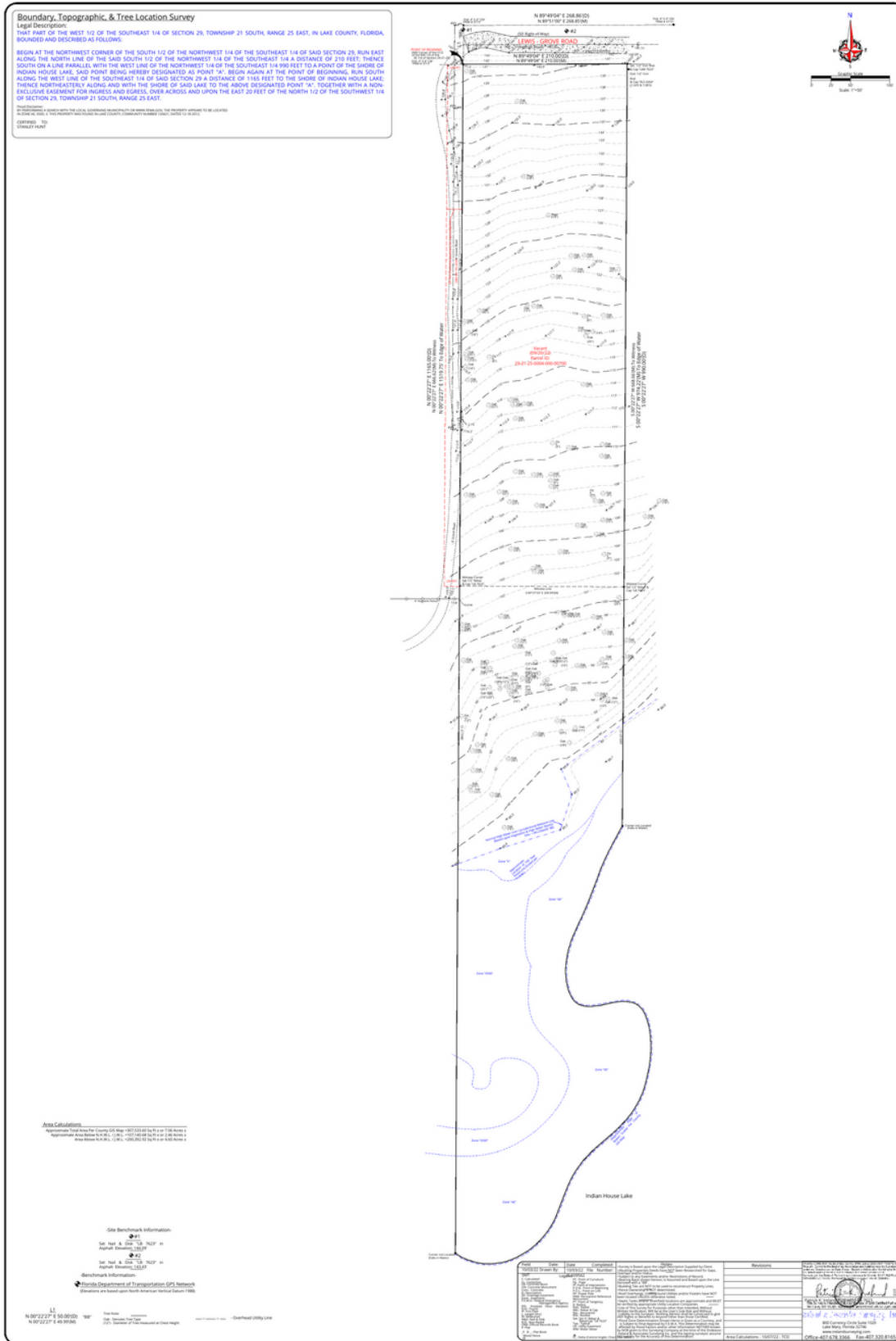
Orlando, FL 32819

www.allied-comm.com



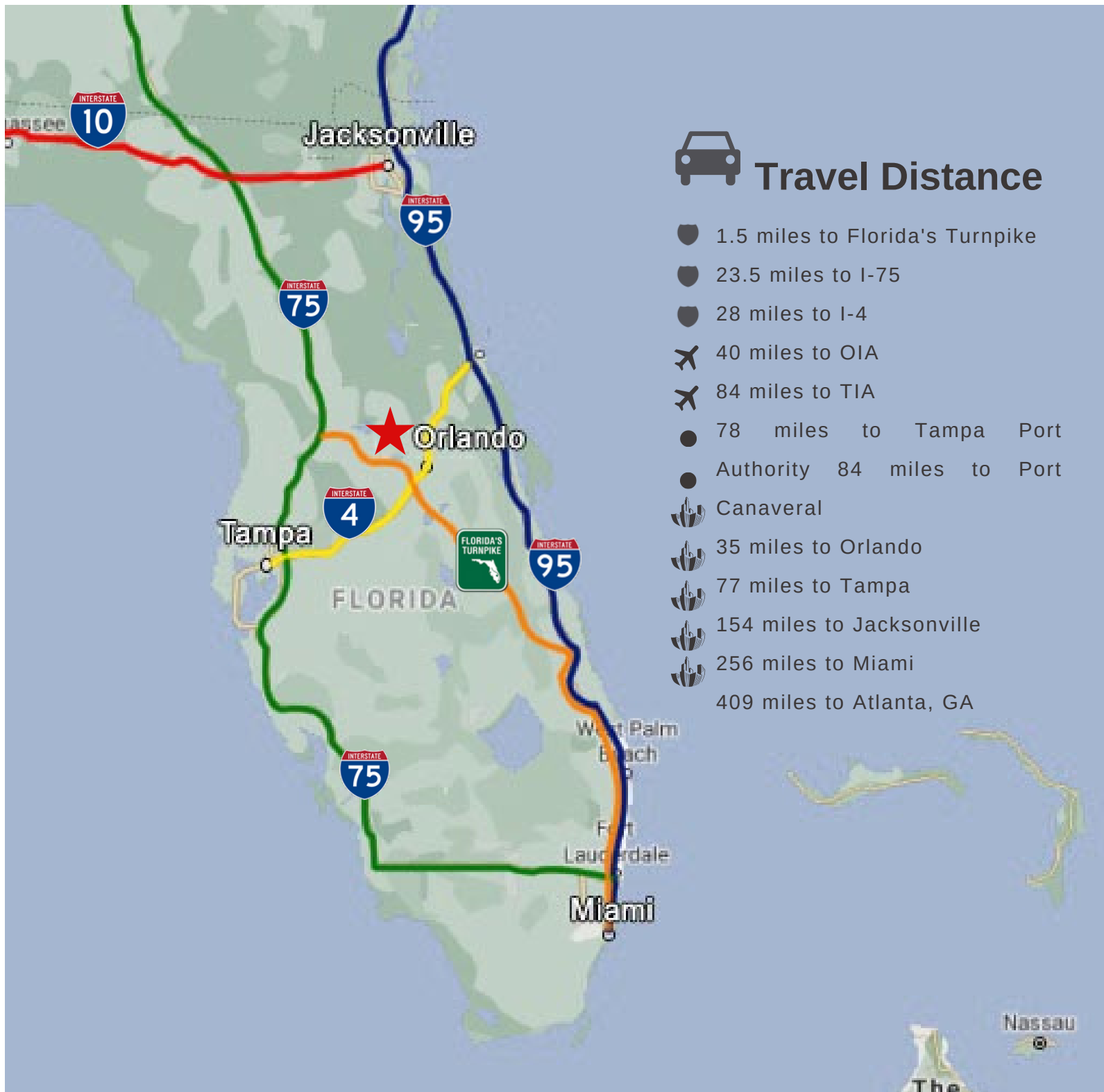
Allied Commercial  
REAL ESTATE

# SURVEY 7.06 ACRES



**SHER TOLAN, SIOR**  
 407-810-2291  
 stolan@allied-comm.com  
 5401 S Kirkman Rd. Suite 310  
 Orlando, FL 32819  
 www.allied-comm.com





This information has been obtained from sources believed reliable, but has not been verified for accuracy or completeness. You should conduct a careful, independent investigation of the property and verify all information. Any reliance on this information is solely at your own risk. Allied Commercial and the Allied Commercial logo are service marks of Allied Commercial Partners, LLC. All other marks displayed on this document are the property of their respective owners. Photos herein are the property of their respective owners. Use of these images without the express written consent of the owner is prohibited.

## SHER TOLAN, SIOR

407-810-2291  
 stolan@allied-comm.com  
 5401 S Kirkman Rd. Suite 310  
 Orlando, FL 32819  
 www.allied-comm.com

